

marina4x4

a c c e s s o i r e s

www.marina4x4.com - info@marina4x4.com - Tel: 04.92.910.910

Du lundi au vendredi : 8H45 à 12H30 - 13H30 à 18h00

651, rue Henri Laugier - ZI Des 3 Moulins - 06600 Antibes

UPRACKS
upracks.com
TRAVEL ROOF RACK SOLUTIONS

TRAVEL ROOF RACK SOLUTIONS
Instructions de montage (63BEDSLIDE4TEX)



TOP FLOOR ADAPTING SYSTEM :

Sliding loading table with capacity up to 600 kg.

This bed slide has a unique adapting system that permits to adjust its length to match the right extension of the pickups beds.

The product will arrive totally closed (mm 1443) and when fitted can be extended to a maximum length of 1843mm. The floor mat is available in two pieces:

One with 1420mm length plus another 400mm extension. The 400mm extension must be cut to reach the proper size.

Fixing plate under the body = opening – to tailgate side – rear



Totally closed 1443mm

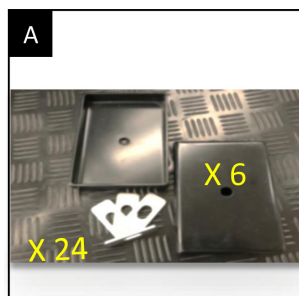


Totally open 1443mm

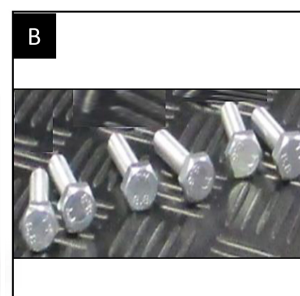


COMPOSANTS

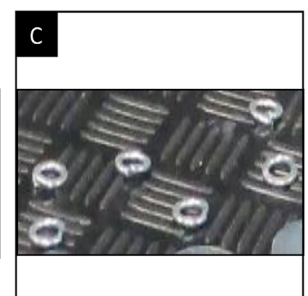
- 6 fixing plates to secure it to the chassis
- 12 washers
- 6 bolts with nut M10
- 6 split washers Grower type
- 24 stainless steel spacers
- Anti-slip mats



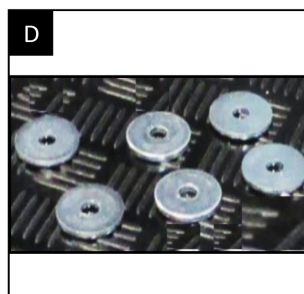
- 6 fixing plates to secure it to the chassis
- 24 stainless steel spacers



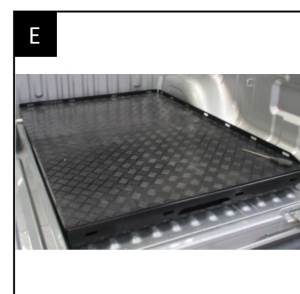
6 bolts with nut M10



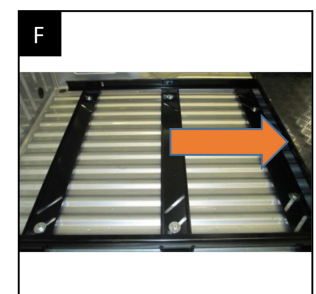
6 split washers Grower type



12 washers



Anti-slip mats



Cadre



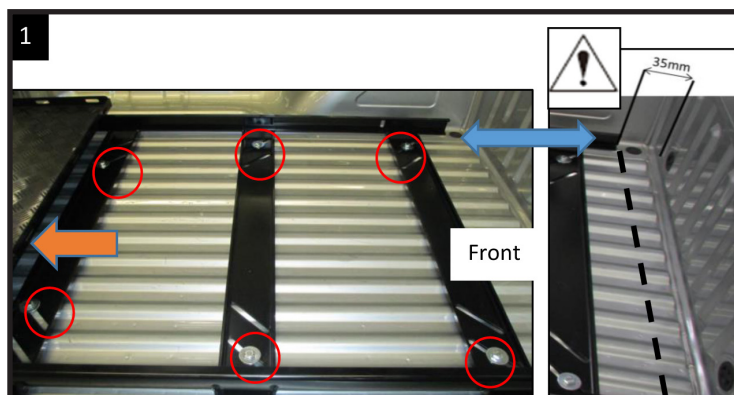
WARNING !

- This article weighs more than 80 Kg, for the first installation, have at least one other person help you.
- During installation, be careful not to pinch your hands.
- Do not load any objects until the bed slide is fully secured to the vehicle chassis with the 6 specific plates.
- Once the bed slide has been installed correctly, it is possible to load material and use the slots to secure the load.
- Do not place the load without having it securely fastened with straps or ropes. The small frame on the entire perimeter of the bed slide is used to hold and secure the load thanks to special slots.
- Do not exceed the maximum permitted payload.
- Do not use the vehicle with the bed slide open.
- Do not load animals and people.
- To open and close the bed slide, use only the handle provided.
- Do not use corrosive products to clean.
- The holes in the front and under the bed slide can be used for inspection or to manually unlock of the pins in case of emergency.

STEP 1

Step 1 :

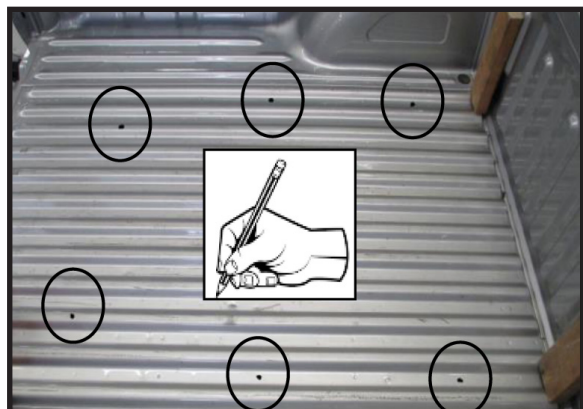
- Open the packaging and familiarise with the product by having at least one other person help you. The product is heavy! Place the kit on the chassis of your pick-up and looking for the best centring between sides and depth. Use the spacers included in the kit to compensate for the chassis concavity. The chassis can also be installed also with the container protection tank.
- Always consider at least 30/35mm distance between the fixed bed slide and the closed side of the container. Such distance will allow you to use any hooks on the rear side without interfering with the correct closing of the tailgate.



STEP 2

Step 2 :

- Once the bed slide has been positioned according to your needs, always having at least one person to help you, open the bed slide using the special handle and slide it slowly to its maximum opening. Pins will prevent it from getting off the rails. Caution because the bed slide is not yet fixed and could move.
- When the bed slide is open, the rails, the frame and crossbeams are visible. There are 4 crossbeams, of which only three are equipped with «fishbone» slots. These slots have been designed to facilitate the fastening to the chassis.
- By convention, we will talk about 1° crossbeam starting from the vehicle cabin side. Therefore the 3° crossbeam will be the rearmost and closest to the tailgate.
- To reach the 3° and last crossbeam use the opening handle. In this way, the pins will be removed from their last housing and remain unlocked, allowing a further exit of the slide bed up to the stoppers. In this position, the third crossbeam will be visible.
- Using a marker mark the points chosen to drill the 6 holes. Drill 2 holes for each crossbeam, preferably in the outermost part, / . e. as close as possible to the side rails.
- Attention! Before drilling, check that no components or interference are in correspondence with the hole in the chassis. If necessary, use the slots to find the best position. It could be necessary to make asymmetric drillings; it is an expected condition.

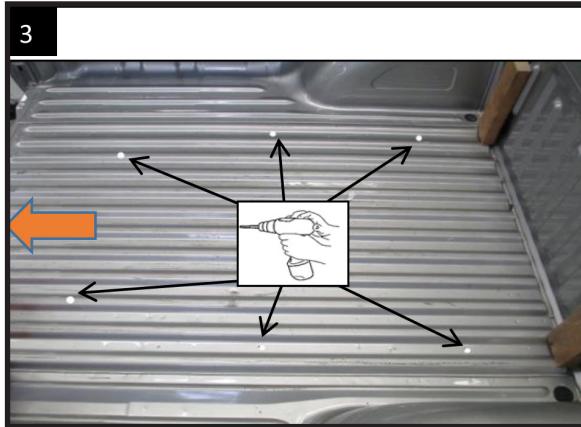


- Remove the bed slide from the vehicle chassis.
- Once the right pre-marked drilling point has been identified, it is advisable to start drilling using a small drill bit.
- Once the hole has been drilled, check again for possible interference and if everything matches, proceed with a suitable tip.

STEP 3

Step 3 :

- Once all 6 holes have been drilled, clean the vehicle chassis accurately to prevent metal chips from getting trapped.
- It is advisable to protect the holes made with anti-corrosion products and/or paints.
- Check that each hole allows the bolt to pass through.
- With the help of another person reposition the bed slide on the chassis, slowly open the tray until finding the first crossbeam.



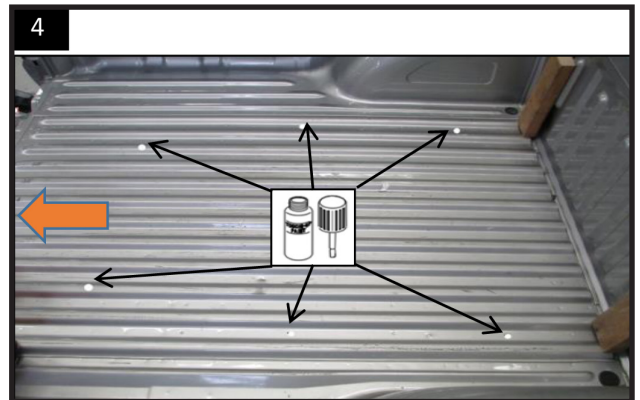
- Start fixing the 2 plates under the chassis immediately and tighten the bolts to a minimum.
- Open the sliding loading table up to its maximum opening and start fixing the plates and bolts on the second and third crossbeam.
- Once all 6 plates have been fixed under the vehicle chassis, tighten the bolts firmly using their self-locking nuts.

STEP 4

Step 4 :

Your bed slide is now installed

- Verify that the side opening and closing pins are correctly functioning and block the bed slide perfectly.
- Become familiar with the product and enjoy the load!



STEP 5

